



Imagerie de l'endométriose chez l'adolescente

Dr DUPRAY

Soirée endométriose AHFMC

12 10 2022



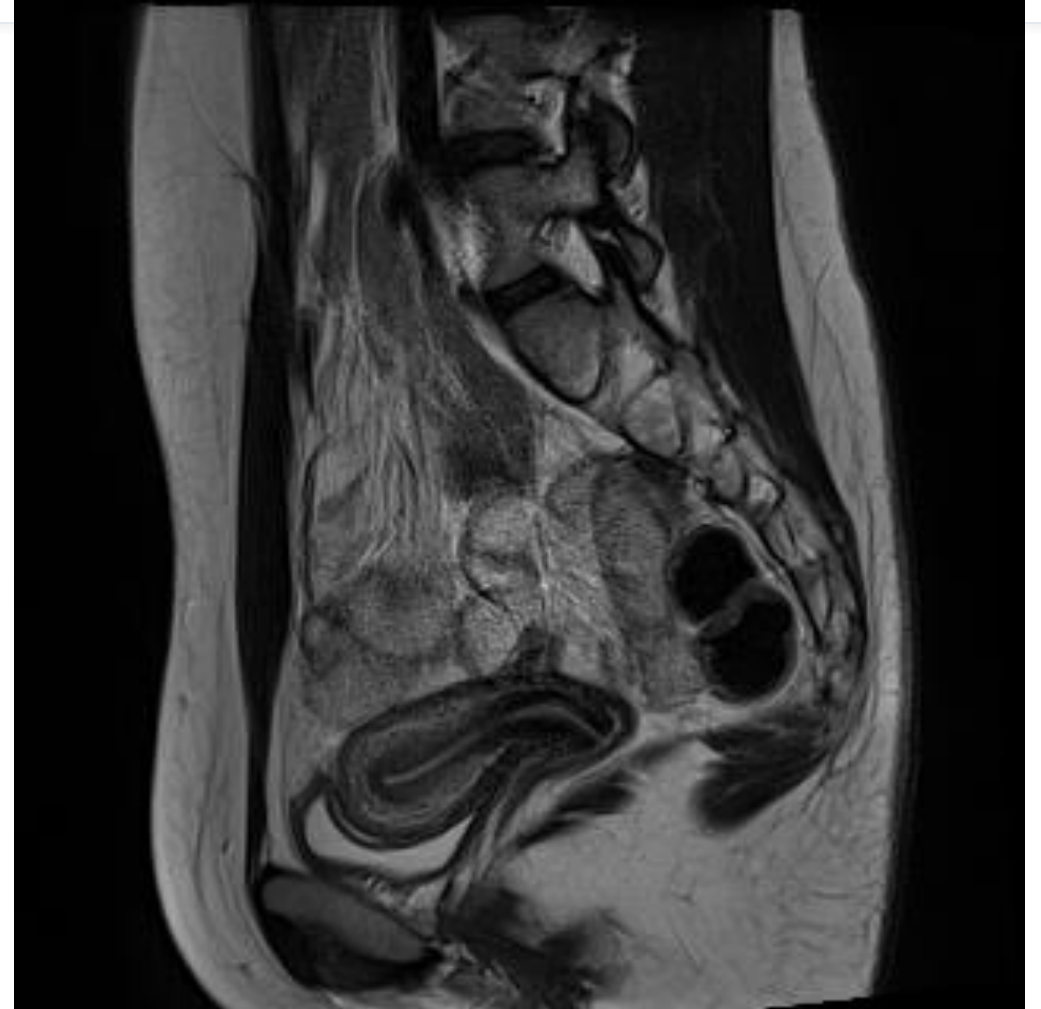
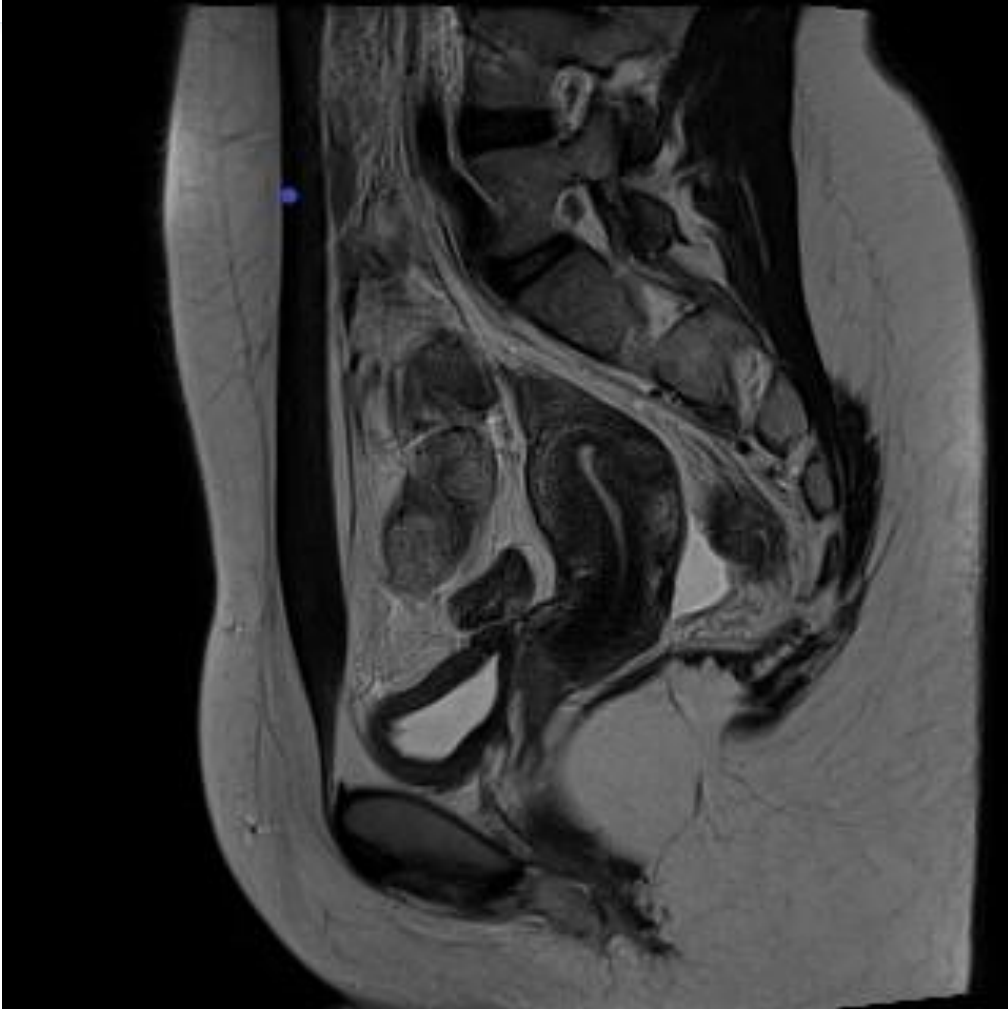
Dysménorrhées sévères

Première intention: ECHOGRAPHIE

- Vessie pleine++
- Morphologie uterus, ovaires.
- Découverte malformation, contrôle des reins.

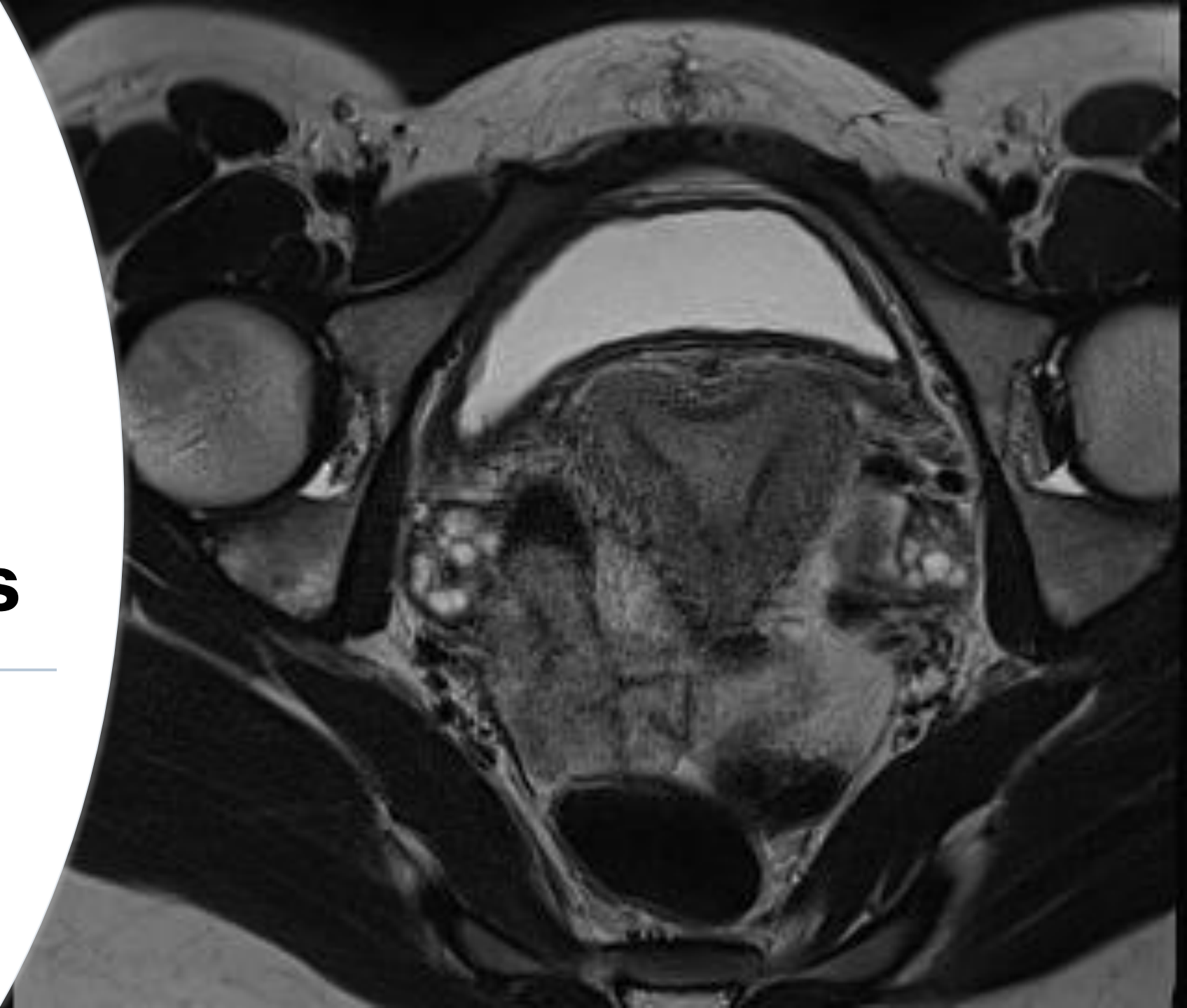


IRM en cas d'échappement thérapeutique





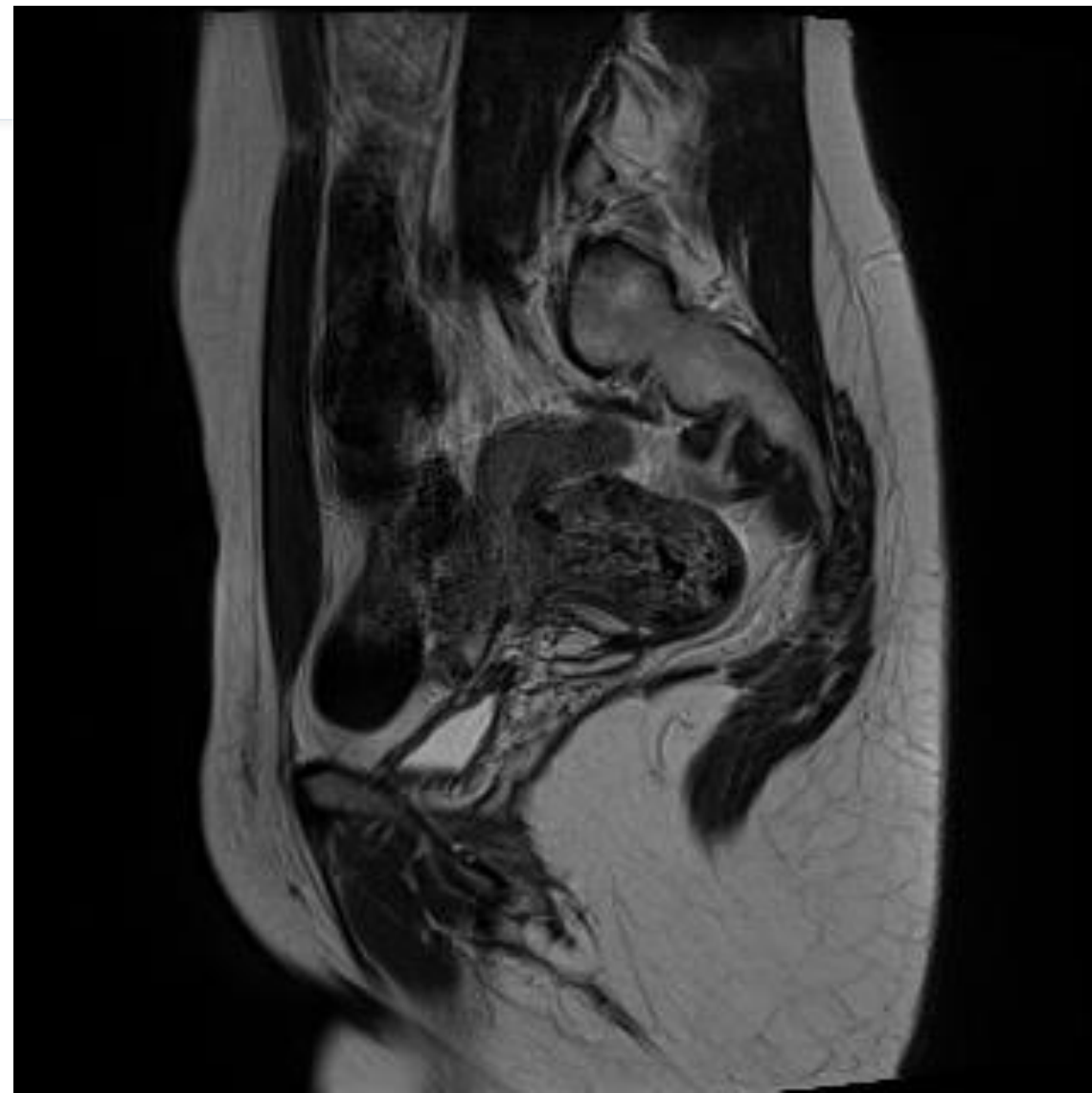
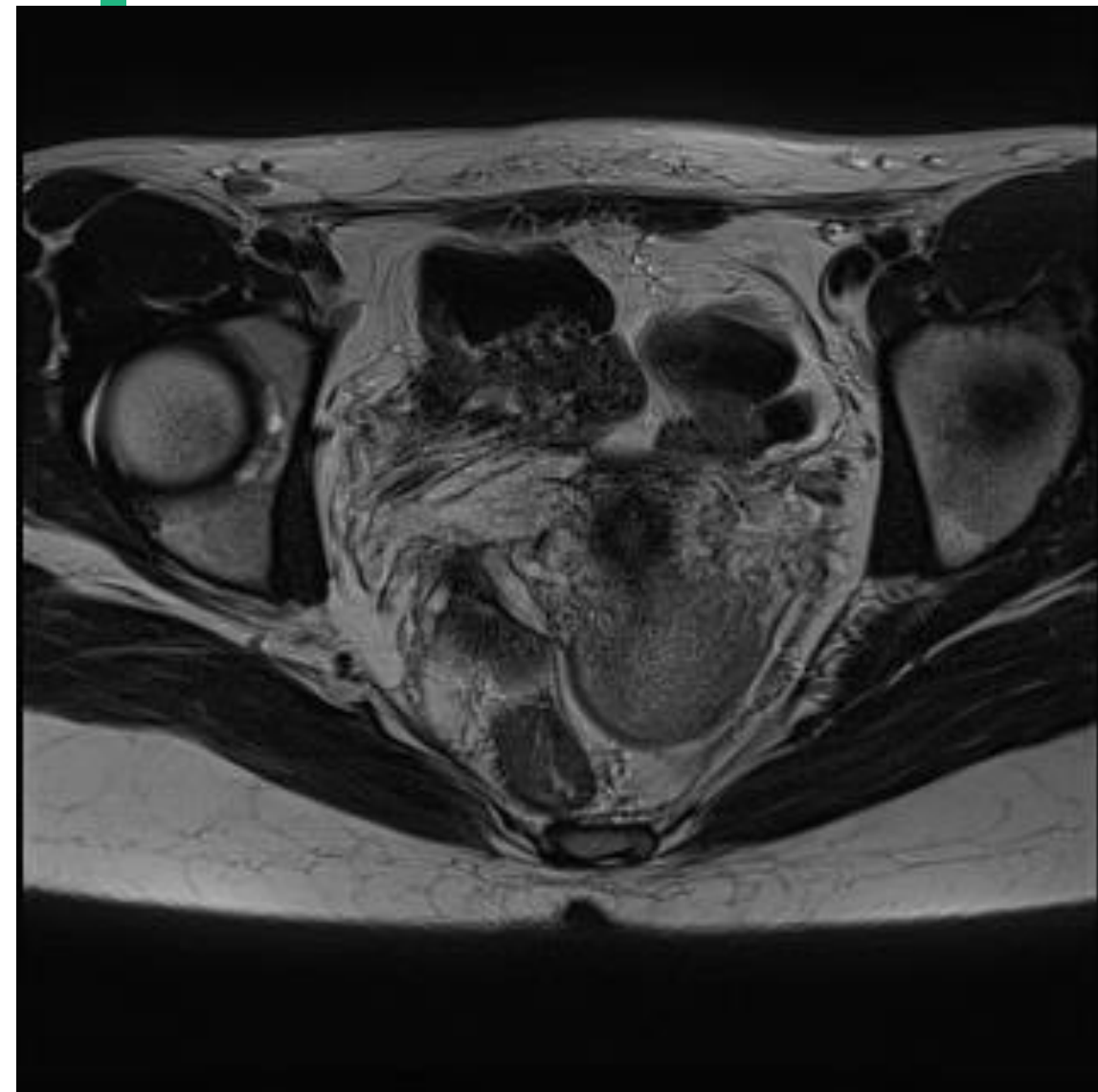
malformations



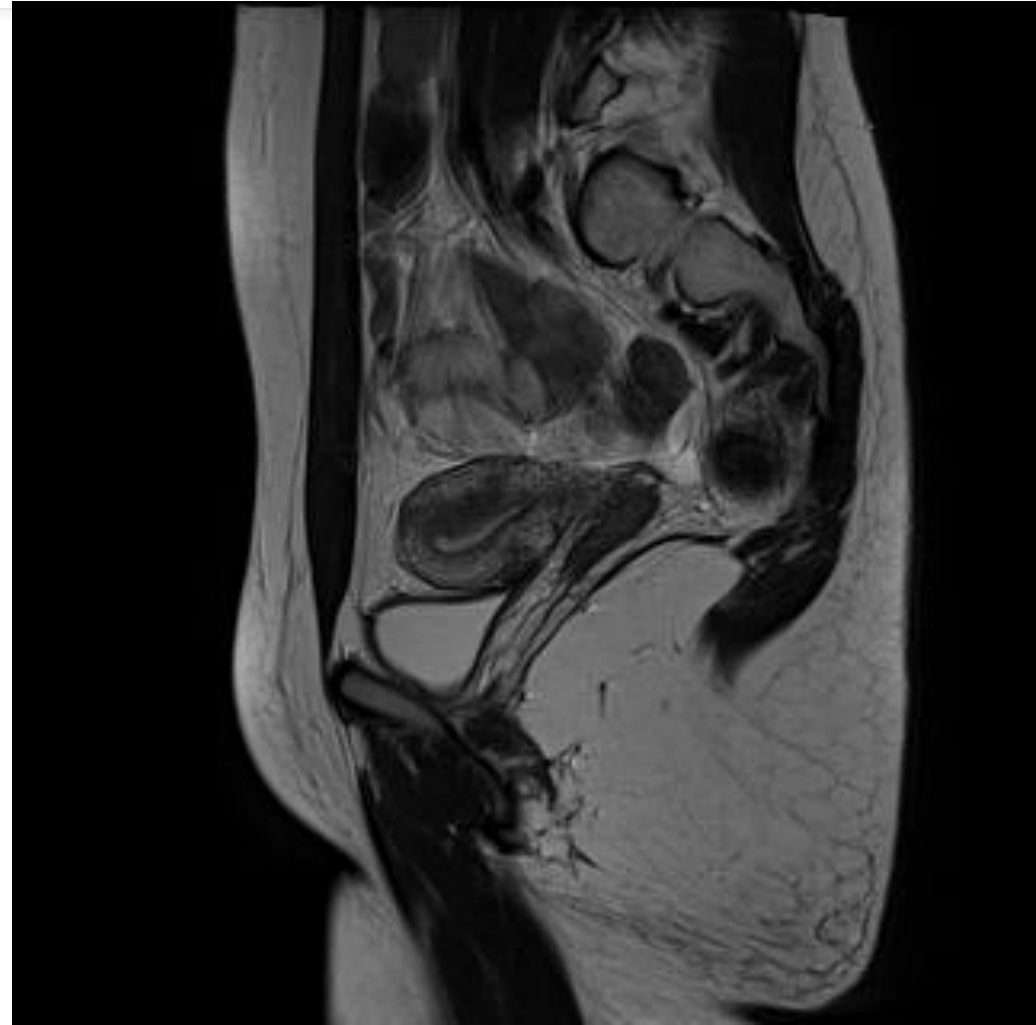
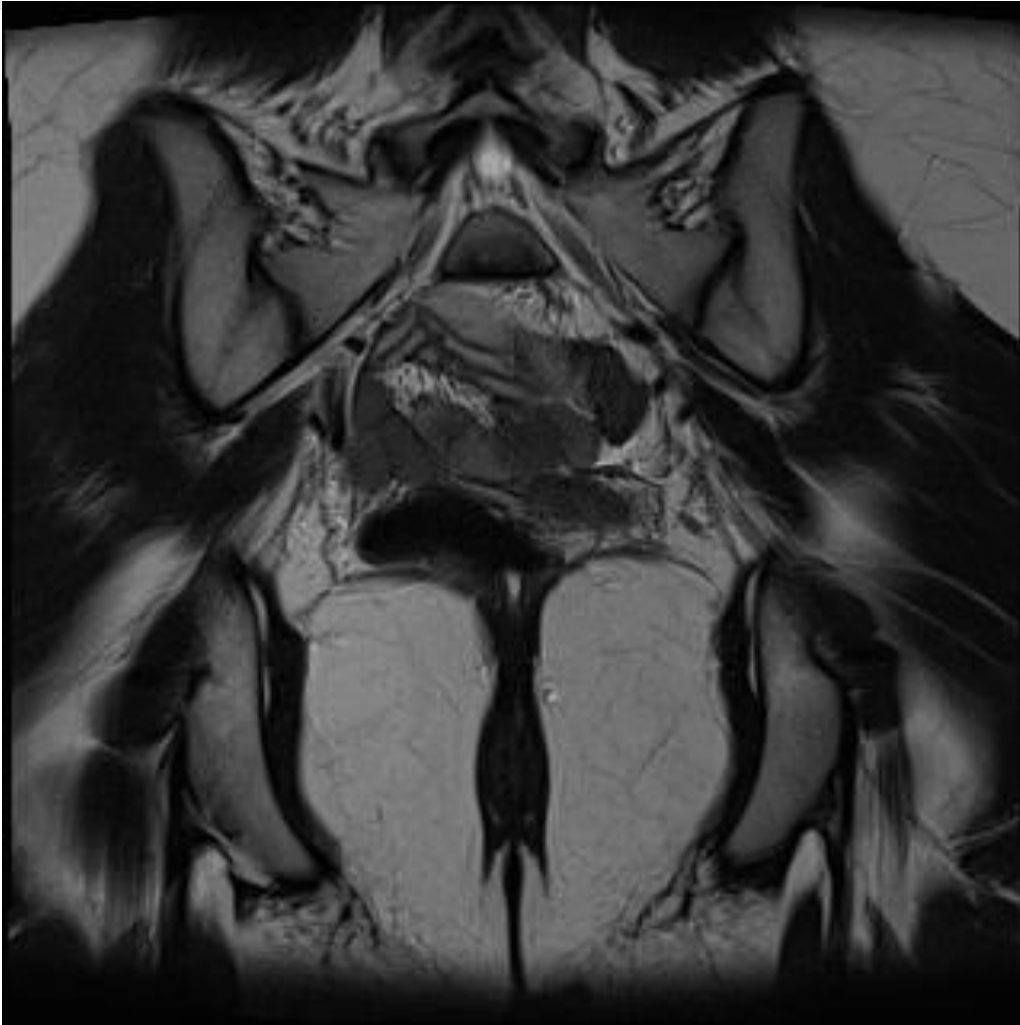
16 ans Adenomyose



LUS droit



15 ans LUS gauche



20 ans

LUS gauche

